

# SYSTEM BNP

Standard-Output Ballast-Operated Cold Cathode

Typical System Configurations

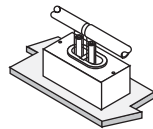
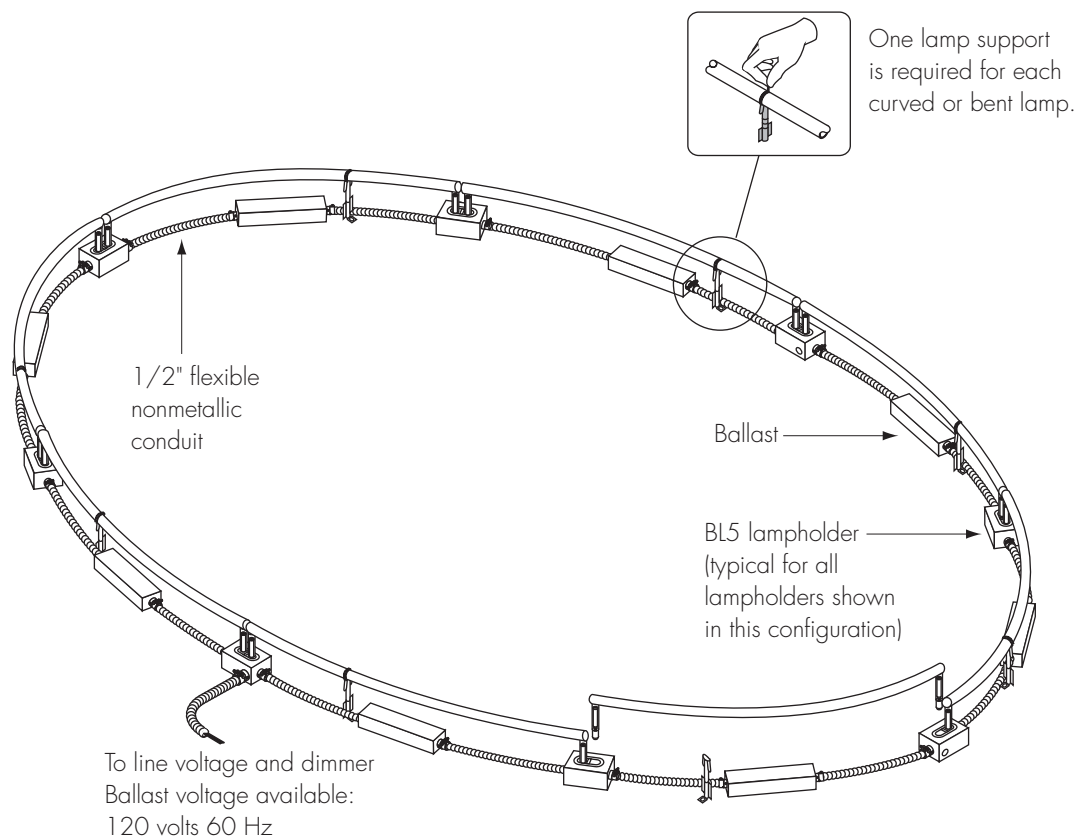
System type: **BNP**

Configuration: **Continuous loop/nonremote ballasts**

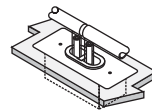
Lampholder mounting shown: **Surface\***

This design is typical for continuous circular, elliptical, or rectilinear configurations in which it is desirable to locate the ballast underneath the lamps. Please note: Although ballasts are very quiet, some slight humming may occur while system is being dimmed. Please consult factory for questions regarding acceptable noise levels for your lighting application.

\*Configurations in which ballasts are located underneath lamps are not suitable for use with recess-mounted lampholders unless special provisions are made to recess-mount the ballasts.



Lampholders shown in diagram are surface-mounted models (type BL).



Lampholders are also available in recess-mounted models (type BL-R).

*Drawings not to scale*

# SYSTEM BNP

Standard-Output Ballast-Operated Cold Cathode

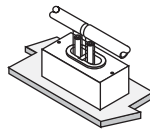
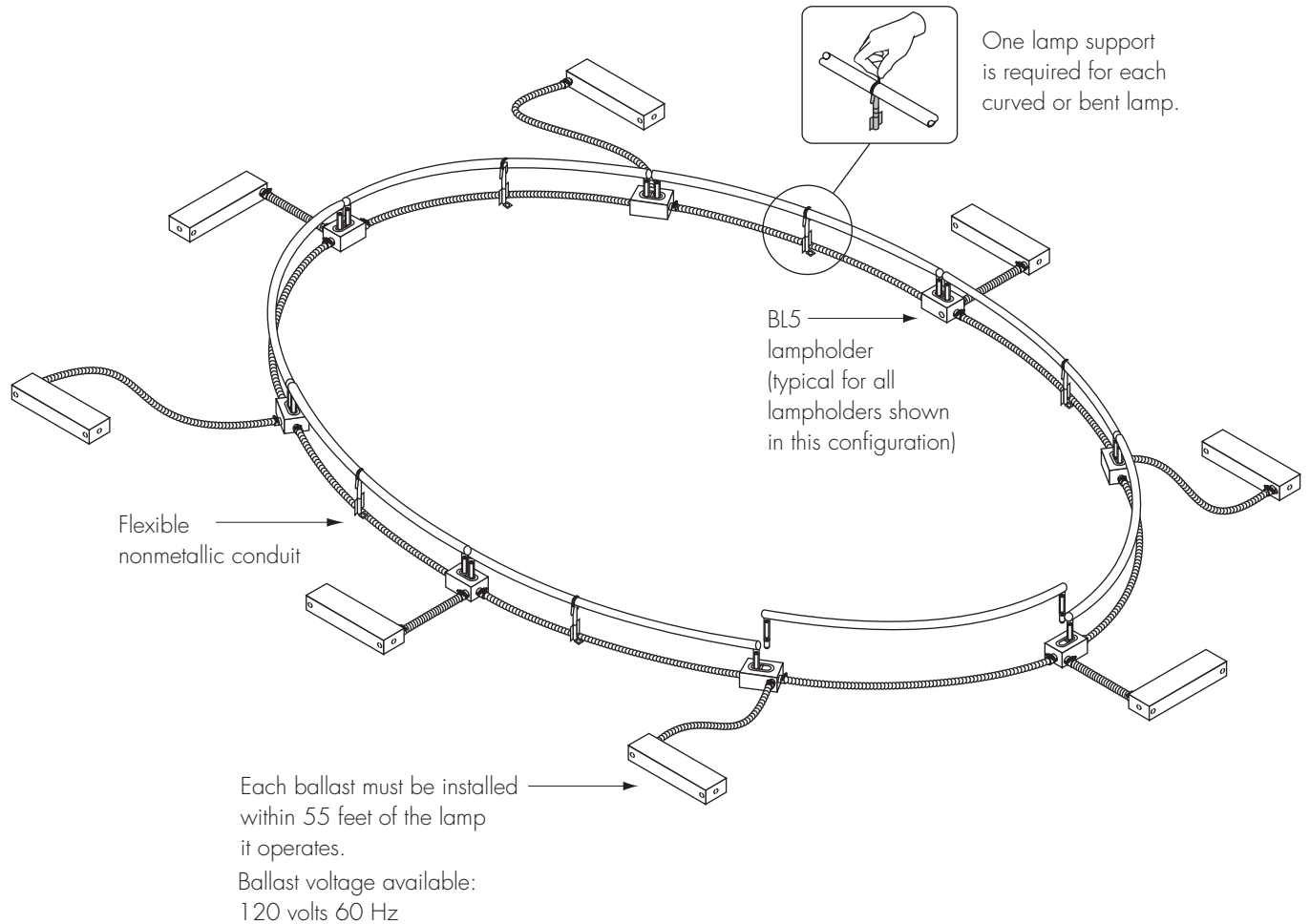
Typical System Configurations (cont'd.)

System type: **BNP**

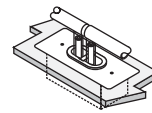
Configuration: **Continuous loop/remote ballasts**

Lampholder mounting shown: **Surface**

This design is typical for continuous circular, elliptical, rectilinear, or free-form configurations in which ballasts are remotely located.



Lampholders shown in diagram are surface-mounted models (type BL).



Lampholders are also available in recess-mounted models (type BL-R).

*Drawings not to scale*