

SYSTEM BNP-HO-EX

High-Output Ballast-Operated Cold Cathode for Export

Typical System Configurations

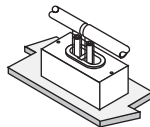
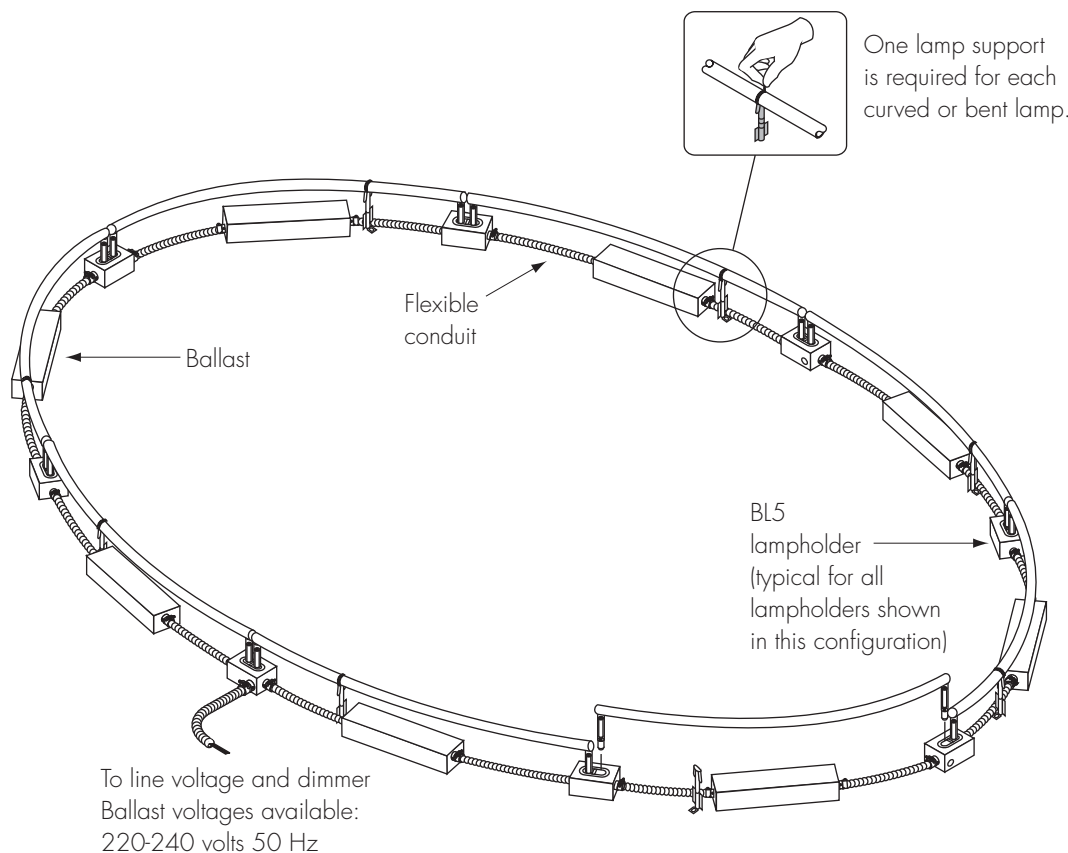
System type: **BNP-HO-EX**

Configuration: **Continuous loop/nonremote ballasts**

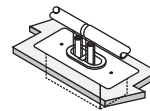
Lampholder mounting shown: **Surface***

This design is typical for continuous circular, elliptical, or rectilinear configurations in which it is desirable to locate the ballast underneath the lamps. Please note: Although ballasts are relatively quiet, some slight humming may occur while system is being dimmed. Please consult factory for questions regarding acceptable noise levels for your lighting application.

*Configurations in which ballasts are located underneath lamps are not suitable for use with recess-mounted lampholders unless special provisions are made to recess-mount the ballasts.



Lampholders shown in diagram are surface-mounted models (type BL).



Lampholders are also available in recess-mounted models (type BL-R).

Drawings not to scale

SYSTEM BNP-HO-EX

High-Output Ballast-Operated Cold Cathode for Export

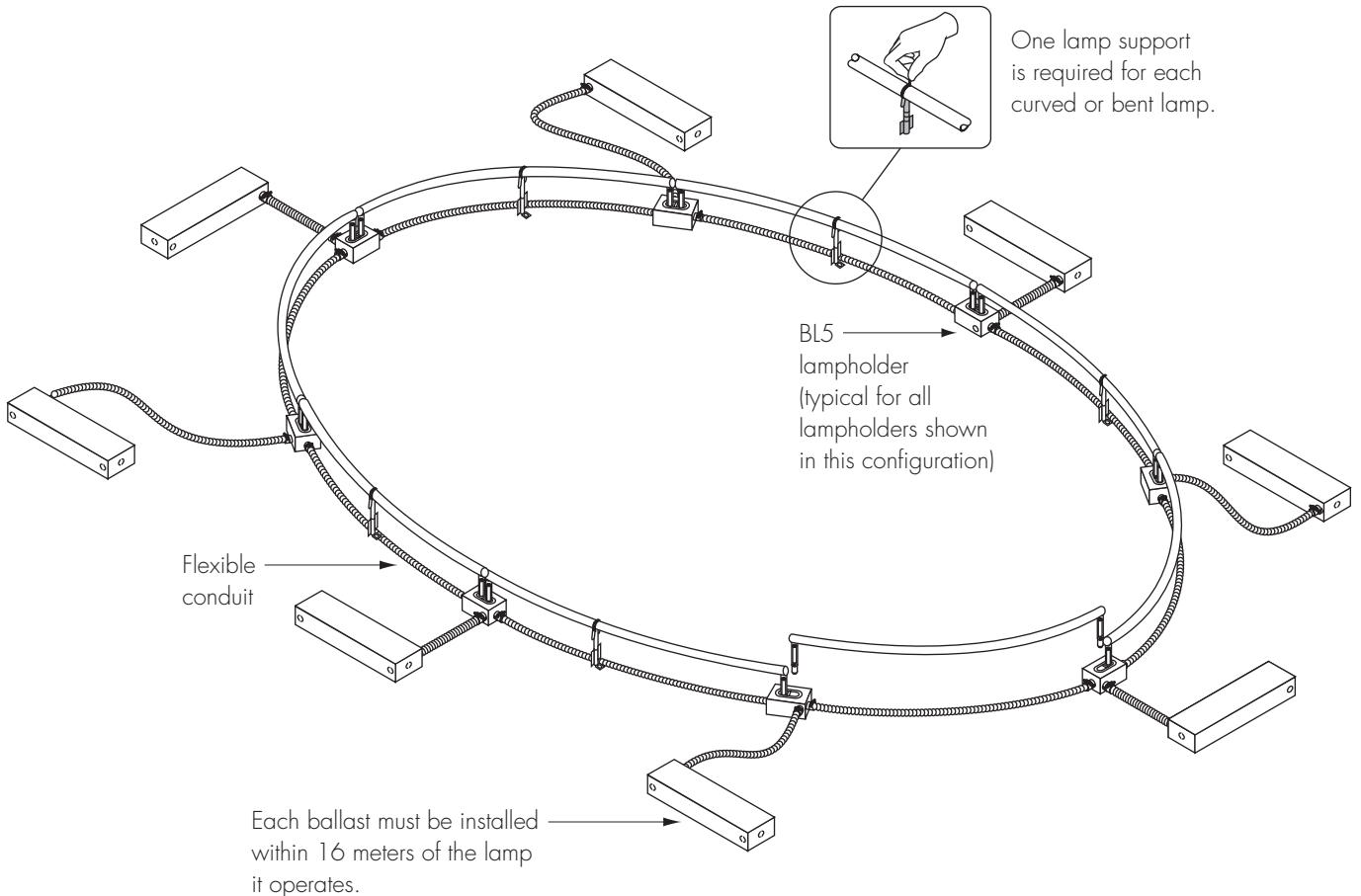
Typical System Configurations (cont'd.)

System type: **BNP-HO-EX**

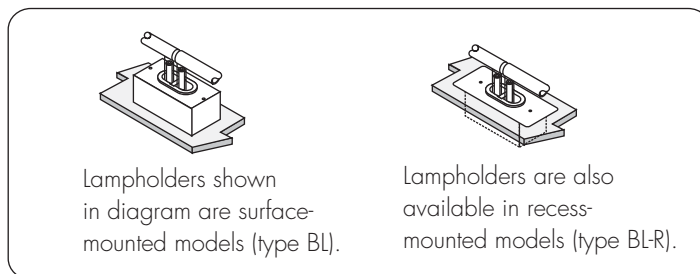
Configuration: **Continuous loop/remote ballasts**

Lampholder mounting shown: **Surface**

This design is typical for continuous circular, elliptical, rectilinear, or free-form configurations in which the ballasts are remotely located.



Ballast voltages available:
220-240 volts 50 Hz



Drawings not to scale