

SYSTEM BNP-EX

Standard-Output Ballast-Operated Cold Cathode for Export

Typical System Configurations

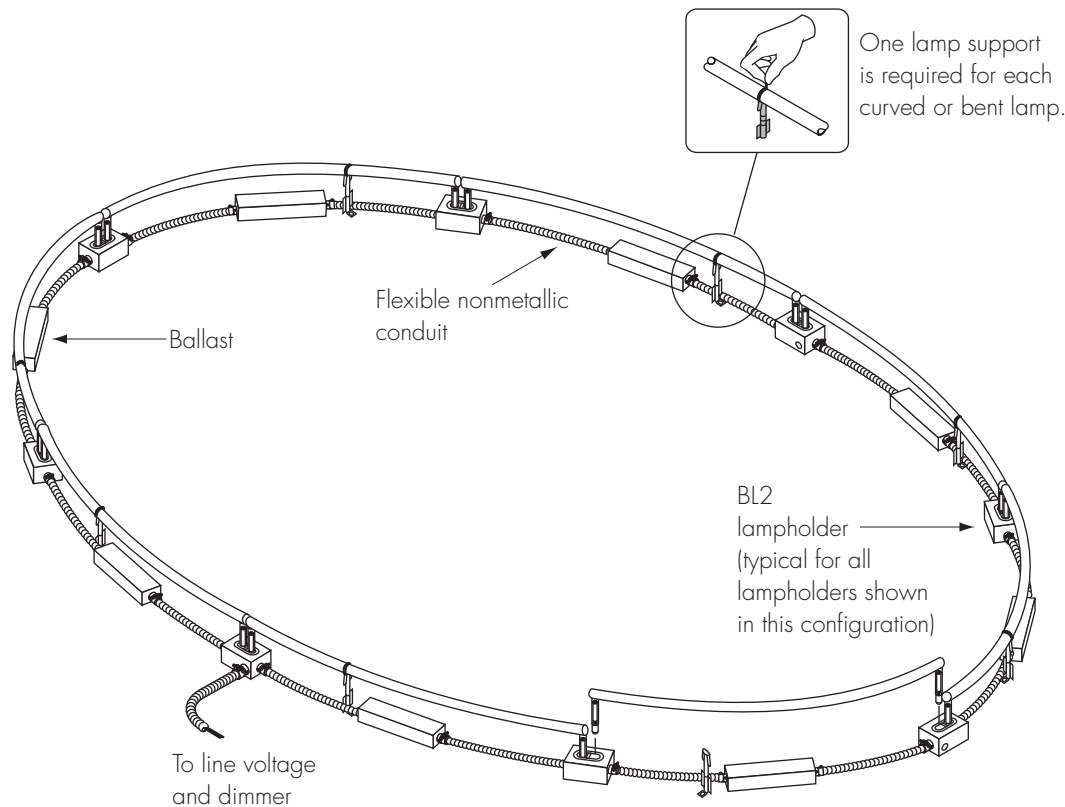
System type: **BNP-EX**

Configuration: **Continuous loop/nonremote ballasts**

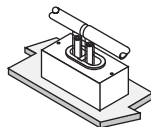
Lampholder mounting shown: **Surface***

This design is typical for continuous circular, elliptical, rectilinear, or free-form configurations. Ballasts are located directly underneath the lamps.

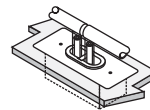
*Configurations in which ballasts are located underneath lamps are not suitable for use with recess-mounted lampholders unless special provisions are made to recess-mount the ballasts.



Ballast voltages available:
236 volts 50/60 Hz and 100-120 volts 50/60 Hz



Lampholders shown in diagram are surface-mounted models (type BL).



Lampholders are also available in recess-mounted models (type BL-R).

Drawings not to scale